

September 2011



a publication of First Lutheran
Community Church

FIRST LUTHERAN COMMUNITY CHURCH PRESENTS.....



Saturday September 24th, 6:00-8:00pm Family Movie Night.

Tickets are \$2 per person or \$5 per family. Sell 4 individual or two family movie passes to friends and get a free box of licorice! Snacks will be available at the movie for a small donation. Funds raised will go to the FLCC Sunday school program.

Tickets will go on sale Sunday Sept. 11th. Pre-purchase your tickets and get a free gift! For more information contact Kelly or Tracy at the church office, 360-876-3901.

Pastor Doug Nemitz

Virgil Wood, Pastor Emeritus

“Friends, select from among yourselves seven men of good standing, full of the Spirit and of wisdom, whom we may appoint to this task.” — Acts 6:3

Dear FLCC Family,

The load had become too heavy for the apostles. Responsibility over so many things had caused the apostles to become tired and neglectful. Some members of the early church had become frustrated and resentful. Concentrating authority in the few, had weakened the many. Something new, something different had to happen.

It was time for a change. The time had come to expand and diversify the leadership. Could the apostles entrust leadership to others? Is that possible? It was now! In a spirit of prayer, leaders were raised up from within the community. The new leaders felt the hands of blessing for service.

Leadership can surely be demanding. To perform at an optimal level of excellence at all times, in an effort to be a truly good steward, can exhaust even the most tireless of saints. May God forgive us for falling into habits and routines in an effort to manage the workload!

And may God gift us with people of new energy, fresh vision, and unspent zeal! They will challenge our habits and routines by seeing the issues in new ways and asking the crucial questions: Are we doing what is most important most of the time? Does this activity further God's mission for our congregation, or does it simply maintain what we have been? Are we more concerned about the past or the future?

Leaders do not produce followers, but more leaders. They do not hoard authority, but share it. They watch for the gifts for service that the Spirit is stirring up within the community of faith. They see the enthusiasm and passion that others are bringing to the congregation. They rejoice in these gifts and, in a spirit of prayer and blessing, release them for service.

Your leadership team, the Congregation Council, will be looking for the unused gifts for leadership in you. For it will take all of us to move into the future, the dream God has for us. It will take the whole body of Christ working together for the mutual upbuilding of the church of Christ to reach into this future.

I ask that you be open to the stirrings in your hearts, to the call, wisdom, and Spirit in you. I ask that you will then respond to the affirmation from the leadership team and joyfully feel the hands of blessing in our ministry together.

I pray that the Spirit will stir up among us people of gifts and energy who see by faith a service that they can give. And also, that we would be made open to their enthusiasm, and we would embrace their leadership for the sake of the world Jesus loves.

Blessings,
Pastor Doug

Did you know????

- **The church is collecting your old ink printer cartridges and aluminum cans as a fundraiser???**
- **You have a church mailbox to check every Sunday???**
- **The church needs childcare workers for Sundays and Wednesdays (coming in the fall) ages 16 or older???**
- **Sonja in the office is collecting old Survivor Relay for Life T-shirts, especially those before 2005 and 2006 and 2007???** Please contact Sonja before you drop it off.

Contact the office if you would like to help or have items to contribute! 360-876-3901, flchurch@wavecable.com

General Budget Update July 2011

Expenses YTD-	\$ 257,253
Giving YTD-	\$ 238,753
Shortage	\$-18,500,
Pledge rec'd %	100%



Thank you for your tithes and offerings. First Lutheran is solely supported by your gifts. If you have questions about your giving statement please contact Sonja in the office.

News From Noah's Ark Preschool

The start of school is just around the corner! That news probably elicits both groans and cheers! As a parent, I have enjoyed having my children home during the day and doing things with them; but as a teacher my "beginning a new year" juices are starting to run! As much as I dislike the end of summer, I still look forward to a new school year. My hope is that we will continue to enjoy some nice warm weather as we start back to school.

If you have been watching the playground by the lower parking lot, you have noticed some changes. A new climbing/play toy is being assembled there. The playground will be used primarily by Noah's Ark Daycare and Noah's Ark Preschool students, but Sunday School students will also enjoy it. Many thanks to Jim Hassebrock, Glenn Hassebrock and Daniel Spellman for the many HOURS of work they have volunteered in planning, equipment assembly and cement work. If you want to join in the playground "fun", we still need help pulling weeds and moving/spreading the ground cover. Please contact the Preschool or the Daycare, if you can assist. We hope to have the playground ready to use by mid-September.

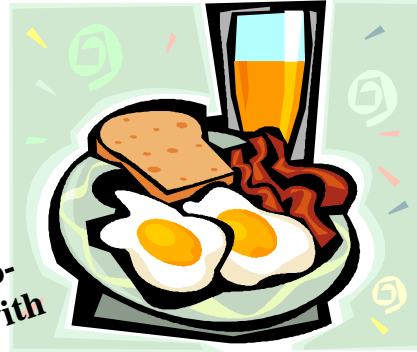
Thank you to all of the volunteers who made the Rummage Sale and Family Fun Day a success. The proceeds from that day are helping to pay for the ground cover to be used in the playground under construction. Thanks also to the many people who came to the Rummage Sale and purchased items.

As I have been working on preschool registrations this summer, I have been breaking down the hours and dollars. I figured out that the tuition for our two-hour class averages \$10.32 per class session for co-op tuition families and \$12.42 per class session for full fee tuition families. That works out to \$5.16 and \$6.21 per hour. In my opinion, that is a very reasonable rate for educating children! Many babysitters charge \$5.00 to \$6.00 per hour, and I think we are teaching students as much or more than many babysitters! I hope that families consider this information as they try to balance their home budgets and decide between dance lessons or soccer teams versus preschool tuition.



YOUTH NEWS

**Youth Sunday School Kickoff
Breakfast
Sunday Sept. 11th, 9:30am
Downstairs at the church.
Come have fun, eat breakfast and
check out the new Confirmation pro-
gram for Jr. High and make plans with
Kelly for the Senior High!**



**Wednesday Night
Youth Group
Start up September
14th!**

We will meet every Wed. from 7:00-8:15. This is for 7th-12th graders to have fun, socialize and bring friends. We will be planning events at the church and field trips!

**Sunday Evenings Youth and
Confirmation Program
H2H (Head to Heart)
Kick-off Sunday Sept. 11th
6:00pm in the Sanctuary
for Jr. and Sr. High**



ADVENTURES IN GOD'S KINGDOM SUNDAY SCHOOL

Adventures Breakfast Blast-Off!!!

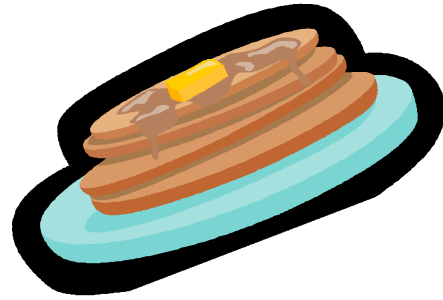
Sunday September 11th, 9:30am

Come enjoy breakfast and fun and start the school year off!

Please fill out a Sunday School

Registration form, you can get one at

the Welcome Center or on the website, www.firstlutheranpo.com.



****Kids Club is
coming back!****

Wednesday September
14th we will be
starting up Buzz Family
Nights. We will have a
fun activity for school
age kids each
Wednesday from
7:00-8:15pm.



**FIRST
LUTHERAN
COMMUNITY
CHURCH
PRESENTS.....**

**VeggieTales Princess and the
PopStar.**

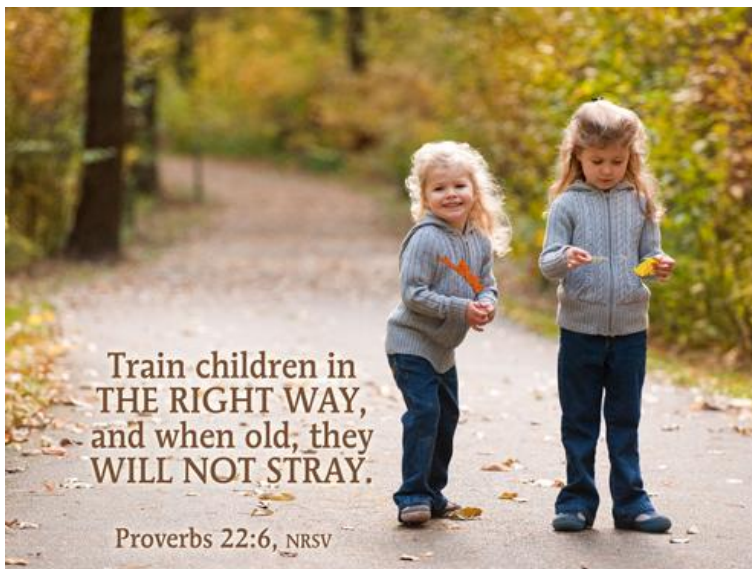
Saturday

**Sept. 24th, 6:00pm. Tickets
are \$2/person or \$5/family.**

**Get yours in the Fellowship
Hall Sunday morning or at the
church office. (This is a family event,
not a drop-off event)**

NOAH'S ARK DAYCARE

Just a little update on our Noah's Ark Daycare- We had a great summer and now it's time to transition back into the school year. We have openings for children in our daycare, as well as taking applications for substitute teachers. We are making great headway on the playground and plan to be up and running by fall. Thanks so much for our successful rummage sale, WOW. I would like to thank all of you for your hard work and support, it's been amazing! Joy Swatek, Director.



FIRST LUTHERAN COMMUNITY CHURCH												
PROFIT-LOSS MONTHLY FINANCIAL SUMMARY - 2011												
	JAN	FEB	MARCH	APRIL	MAY	JUNE	JULY	TOTAL	BUDGET	YTD BGT	YTD %	YTD %
									2011	BALANCE	BUDGET	ACTUAL
INCOME												
General Giving												
<i>Envelopes</i>	\$26,699	\$27,427	\$33,037	\$30,229	\$38,937	\$32,139	\$32,895	\$221,363				
<i>Loose Offering</i>	\$425	\$324	\$480	\$622	\$390	\$318	\$407	\$2,985				
<i>Misc Giving</i>	\$1,265	\$312	\$1,207	\$1,269	\$986	\$265	\$320	\$6,624				
Facility Usage												
<i>NA Preschool</i>	\$460	\$460	\$460	\$460	\$460	\$0	\$0	\$2,300				
<i>NA Day Care</i>	\$725	\$725	\$725	\$725	\$725	\$725	\$725	\$5,075				
<i>Al-anon</i>	\$20	\$0	\$80	\$100	\$0	\$120	\$0	\$320				
<i>East PO Group</i>	\$125	\$125	\$125	\$125	\$125	\$150	\$150	\$925				
<i>Facility Use-other</i>	\$40	\$60	\$40	\$0	\$40	\$0	\$0	\$180				
<i>Other Income</i>	\$0	\$0	\$0	\$0	\$0	\$0	\$0	\$0				
TOTAL INCOME	\$29,759	\$29,433	\$36,164	\$33,530	\$41,663	\$33,716	\$34,497	\$238,763	\$448,500	\$209,747	58.3%	53.23%
EXPENSE												
Payroll												
<i>Retirement&Med</i>	\$1,432	\$1,501	\$1,961	\$0	\$5,685	\$0	\$1,336	\$11,915				
<i>Payroll Tax</i>	\$763	\$949	\$890	\$1,131	\$1,377	\$340	\$1,015	\$6,464				
<i>Payroll</i>	\$19,467	\$21,340	\$21,560	\$22,936	\$19,472	\$19,751	\$18,778	\$143,304				
Total Payroll Exp	\$21,662	\$23,790	\$24,411	\$24,067	\$26,534	\$20,091	\$21,129	\$161,683	\$269,907	\$108,224	58.3%	59.90%
Continuing Educ	\$76	\$0	\$0	\$0	\$0	\$261	\$0	\$327	\$2,300	\$1,973	58.3%	14.23%
Operations												
<i>Insurance</i>	\$524	\$612	\$1,308	\$0	\$538	\$611	\$617	\$4,209	\$6,400	\$2,191	58.3%	65.76%
<i>Maintenance</i>	\$72	\$642	\$155	\$163	\$578	\$588	\$562	\$2,760	\$5,300	\$2,540	58.3%	52.08%
<i>Bank Charges</i>	\$0	\$0	\$193	\$12	\$18	\$21	\$0					
<i>Church Office</i>	\$644	\$816	\$1,696	\$880	\$555	\$537	\$711	\$5,739	\$11,100	\$5,361	58.3%	51.71%
<i>Communications</i>	\$192	\$39	\$128	\$300	\$39	\$39	\$411	\$1,148	\$1,000	-\$148	58.3%	114.82%
<i>Building Mortgage</i>	\$8,954	\$8,954	\$8,954	\$8,954	\$8,954	\$4,899	\$4,878	\$54,545	\$107,000	\$52,454	58.3%	50.98%
<i>Mileage</i>	\$279	\$0	\$0	\$0	\$143	\$0	\$0	\$421	\$1,000	\$579	58.3%	42.12%
<i>Wor&Music/Educ</i>	\$0	\$100	\$74	\$47	\$18	\$0	\$117	\$365	\$1,100	\$745	58.3%	32.24%
<i>Outreach</i>	\$0	\$149	\$100	\$100	\$308	\$100	\$0	\$758	\$1,600	\$842	58.3%	47.36%
<i>Nursery/Youth</i>	\$0	\$0	\$0	\$22	\$0	\$36	\$0	\$58	\$100	\$42	58.3%	57.66%
<i>Misc Expense</i>	\$0	\$0	\$0	\$14	\$0	\$0	\$0	\$14			58.3%	
<i>Utilities</i>	\$2,490	\$3,753	\$3,433	\$2,894	\$2,445	\$2,380	\$2,333	\$19,729	\$31,700	\$11,971	58.3%	62.24%
<i>Extended Ministry</i>	\$0	\$833	\$1,666	\$833	\$833	\$833	\$833	\$5,833	\$10,000	\$4,167	58.3%	58.33%
Total Operational Exp	\$13,055	\$15,898	\$17,705	\$14,219	\$14,428	\$10,296	\$10,461	\$95,569	\$448,507	\$352,938	58.3%	21.31%
TOTAL EXPENSES	\$34,793	\$39,688	\$42,116	\$38,286	\$40,962	\$30,387	\$31,590	\$257,253	\$448,507	\$190,941	58.3%	57.36%
NET INCOME	-\$5,034	-\$10,254	-\$5,962	-\$4,756	\$702	\$3,329	\$2,907	-\$19,069				
BANK BALANCE						\$5,770	Unavailable					
SAVINGS ACCOUNT						\$470	\$458					
MAJOR MAINT ACCT						\$19,342	\$19,532					
Community Ctr Acct						\$16,424						
MORTGAGE RESERVE							\$3,136					

FLCC Monthly Key Metrics Report

		Jan	Feb	Mar	Apr	May	Jun	Jul	YTD	
Key Metrics	# of Pledges	2011	137	137	139	139	138	136	136	137
		2010	171	175	177	177	177	177	177	176
		% Chg	-19.9%	-21.7%	-21.5%	-21.5%	-22.0%	-23.2%	-23.2%	-21.9%
	Total Amount Pledged	2011	\$23,816	\$23,816	\$24,086	\$23,959	\$23,782	\$23,568	\$23,568	\$166,595
		2010	\$27,515	\$27,515	\$27,515	\$27,515	\$27,515	\$27,515	\$27,515	\$330,180
		% Chg	-13.4%	-13.4%	-12.5%	-12.9%	-13.6%	-14.3%	-14.3%	-49.5%
	Average Pledge	2011	173.84	173.84	173.28	172.37	172.33	173.29	173.29	\$173.18
		2010	160.91	157.23	155.45	155.45	155.45	155.45	155.45	\$156.48
		% Chg	8.0%	10.6%	11.5%	10.9%	10.9%	11.5%	11.5%	10.7%
	Amount Pledges Rec'd	2011	\$20,366	\$20,461	\$25,329	\$21,384	\$28,299	\$26,640	\$25,340	\$167,819
		2010	\$28,407	\$26,797	\$23,290	\$24,414	\$31,583	\$19,943	\$25,466	\$179,900
		% Chg	-28.3%	-23.6%	8.8%	-12.4%	-10.4%	33.6%	-0.5%	-6.7%
	Pledge \$ Received vs Pledged \$ Expected	2011	85.5%	85.9%	105.2%	89.3%	119.0%	113.0%	107.5%	100.8%
		2010	103.2%	97.4%	84.6%	88.7%	114.8%	72.5%	92.6%	93.4%
		% Chg	-17.2%	-11.8%	24.2%	0.6%	3.7%	56.0%	16.2%	7.9%
	% of Pledging Units Current w/ pledge	2011	60.6%	67.9%	71.2%	66.2%	68.9%	61.0%	56.5%	0.65
		2010	71.5%	70.3%	56.4%	68.0%	68.0%	57.6%	66.0%	0.65
		% Chg	-15.2%	-3.4%	26.2%	-2.6%	1.3%	5.9%	-14.4%	-1.2%
Average Weekly Worship Attendance	2011	256	264	303	342	268	231	191	265	
	2010	289	274	281	282	291	230	217	266	
	% Chg	-11.4%	-3.6%	7.8%	21.3%	-7.9%	0.4%	-12.0%	-0.5%	
Membership	2011	963	970	971	973	981	981	979	974	
	2010	1223	1224	1226	1227	1218	1215	1215	1221	
	% Chg	-21.3%	-20.8%	-20.8%	-20.7%	-19.5%	-19.3%	-19.4%	-20.2%	

FATH, FRIENDSHIP AND FOOD

Wednesday evening, August 17, several members of the QMs attended the "CAIR-MAPS 2011 Interfaith Iftar Dinner for Friends and Neighbors". And that is exactly what it felt like- a meeting of friends and neighbors. We were warmly welcomed to Redmond's very new Islamic Center (their grand opening was just 2 weeks ago at the start of Ramadan) by the Muslim Association of Puget Sound (MAPS) and the Council on American Islamic Relations (CAIR). It is worth noting that this event was free of charge to participants and was meant only to share information and common experience.

The new Center will provide many things to their community- it is a place for prayer, exercise, youth sports, classes, conferences and meditation. It is also very beautiful, with marble, tiles and wall calligraphy. We found it to be impressive in scale, but also very comfortable; the entrance hall was filled with lanterns, candles and rose petals for the occasion.

The gentleman in charge of this event welcomed us and was obviously proud of their new facility. Our very knowledgeable tour guides were also two very typical teenage girls- one plans to study architecture at the UW and the other will study fashion design in Seattle.

A highlight for us was connecting, once again, with several of our Muslim friends from Tacoma and meeting friends of theirs as well. It was so meaningful to be able to share this large-scale, interfaith event with them.

Approximately 300 people were in attendance, perhaps half of them Muslim and half other members of the community, including at least a dozen different churches and civic groups who were recognized by name from the podium. We were told many times to ask any questions that we might have; they were very open and conversation flowed freely. Our table held 5 of us from First Lutheran, 2 of our Tacoma friends and a young couple from the area. The husband was Muslim, his wife was "a believer in Christ" and they came a year ago from New York. Another table held 2 from First Lutheran, a retired Episcopal priest, a Scientologist and 2 Muslims.

FATIH, FRIENDSHIP AND FOOD (cont'd)

Two of the speakers talked to us about Ramadan (the Muslim month-long period of fasting), about our Iftar dinner (iftar is the sunset breaking of the fast each day of Ramadan) and about the differences and similarities between Islam and Christianity. The former mayor of Kirkland spoke. A female Doctor of Psychology (Caucasian, but a Muslim for 21 years) was the next speaker and spoke from her heart about the importance of our similarities rather than our differences, about how our common human experience joins us all together and about how we are ALL, whatever our faith, a part of one reality. And, we can choose, "if we have ears to hear and eyes to see", what our role is in that universal reality.

The final speaker was a young man, a CPA and father of a 6-month-old son, and the leader of the Muslim youth at the Center. He was very dynamic and welcoming and spoke, as well, to the importance of emphasizing our "sameness" rather than our differences, looking to what is good in all of us. He was passionate in his plea to focus on the many important issues facing our world, issues of humanity – hunger, homelessness, oppression. He closed by challenging all of us to ask ourselves what we are doing to make a difference in this world.

Sundown arrived at 8:18 and the fast was broken with a delicious dinner that included plates of dates, babaganoush and pitas, chickpea fritters, samosas filled with spicy potatoes and peas, basmati rice with chicken, curried summer vegetables, tandoori chicken, naan (the bread) and baklava and rice pudding. Sharing this holiday meal with our friends at the Mosque was a unique and unforgettable experience.

The following people attended: Mim & Bill Krabler, Cindy Peterson, Mary Johnson, Dan & Leanne Landon, Kris Courteau and Janet & Tedd Crist. They would be happy to answer any questions you may have. We feel that this type of interfaith event is important and should take place more often in order to encourage respect, acceptance and understanding in our communities.

~~~~~

In our "Question Marks" (QMs) group, we continue to explore our own faith journeys, work for social justice in the world, and seek commonalities in other faiths. If you would like to learn more about this ministry, please contact Darlene Montz, Leanne Landon or Kris Courteau.

## ***THANK YOU, THANK YOU, THANK YOU***

Dear Friends at FLCC,

We want to thank you for all of your prayers, compassionate words and cards of love in the recent loss of my father. It was sudden and a great loss to our family. I also really appreciate your willingness to let Doug be with me and my family as we celebrate my dad's life on September 3rd. You all have been wonderful and so very supportive to both of us at this time, and also since we arrived in March. Please accept our thanks (which is never enough) for all your support, we truly are in your care. In Christ, Pam and Doug

---

---

**WOW!! What a party!! Thank you each and every one of you! The love- the care- the good wishes- the hugs- the words- all full of LOVE!! Thanks for the retirement party and generous gifts. You are the most loving and caring people in the world, this side of Mars!**

**Love Pastor Orv and Donnalee**

---

---

The Rummage Sale was a HUGE SUCCESS! Thank you so much for all the help and support. We were able to raise almost \$3000 which includes a generous gift of \$500 from Thrivent Financial for Lutherans! We logged over 300 volunteers hours to make it happen! Thanks so much to everyone who worked, shopped and contributed to the Rummage Sale and to Thrivent Financial. We are much closer to what is needed to finish the new playground. Kelly Hassebrock

---

---

### **THANKS SO MUCH FOR THE HELP**

I want to send a "Shout-Out" to all the folks who helped put on the "Fiesta" for Pastor Orv. I have received so many great comments on the party, but it took a "community" of folks to pull that off. I am not going to mention names as I would undoubtedly miss someone, but you know who you are. Every hand was so appreciated and as a group we showed Pastor Orv how his Joy has spread to all of us. I will mention here though, that the Youth really stepped up for this and I am so proud of our young members. They are definitely participating in a meaningful way around First Lutheran. I was blessed to have such a great team of folks helping me, Cindy Peterson

# FUN AT FLCC



Outdoor  
Worship  
Service



Orv's  
Retirement  
Party



Rummage Sale

# First Life

and



## PARI SH NURSING

Parish Nurses are registered nurses who can assist with health related concerns or questions and can help with seeking and utilizing community resources. Please contact the church office at 876-3901 or Karen Schneider, RN at 876-2304 or Tina Soete, RN at 871-1322 or Kathleen Nenninger, RN at 253-853-4663, or Marcy Crebs, LPN at 360-874-8162.

## BLOOD PRESSURE/DIABETES SCREENING

How is your blood pressure? You can have your blood pressure checked on the last Sunday of every month in the Fellowship Hall in the Ruth Room #3 before and after the 9:30 a.m. services.



## FIRST DRIVERS

Transportation can be provided during the day for those who need assistance to keep medical, dental, or therapy appointments. You must be able to get in and out of a car with minimal assistance. You can call the church office at 876-3901 or Karen Schneider at 876-2304.



## CASSEROLE CONNECTION: MEALS THAT HEAL

Meals are offered on a short term basis for those who may be experiencing post hospitalization, illness, trauma, or families with a newborn. Please call Kathy Posey at 871-5692 or the church office at 876-3901.



## FIRST CAREGIVERS SUPPORT GROUP

The Caregivers Support Group will meet on Wednesday Sept. 28th at 11 a.m. If you are taking care of a loved one and would like to meet with others who are caregivers in a caring support group, please join us. The group meets on the last Wednesday of every month in the old church library.

For more information, call Dixie Douthit at 876-5270 or Linda Helmer at 253-858-5703.

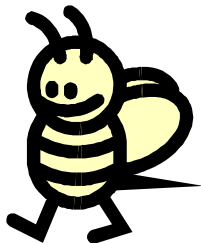
# LOOK WHAT'S HAPPENING

Summer is coming to an end and fall means that many activities and ministries are revving up and getting ready to go. Lutheran World Relief has two packing days each year in which we assemble kits and deliver them to Seattle. They include quilts, health kits, school kits, layettes (for babies) and sewing kits. These “kits” are distributed to those in need around the world. Our Fall packing day is nearing and we could use your help collecting items still needed.



- Ivory bath soap for babies– Individually wrapped and bath size.
- Soap for health kits- Individually wrapped and bath size.
- Booties or infant socks– New layette requirement
- Bath size towels for health kits– New requirement.

Thank you so much for all your support!



## **What's the latest buzz???? The Wednesday night “BUZZ” is coming!!!**

Beginning Wed. September 14th our Buzz family nights will start up. We will gather from 6:30-7:00pm for a social snack time. Beginning at 7:00 we will start up and then break into classes that will run until 8:15pm. Some of the exciting classes to choose from will be: Living the Questions 1, Living the Questions 2, a Card Making class, Mom's group, and a book study lead by Pastor Doug on “Pagan Christianity”.

But wait there's more..... something for the whole family so for the kids we have school age kids club fun and youth group for Junior and Senior High.

## **The BITE is back! The “Bite of First Lutheran” Ministry Fair has been set for October 16th.**

This really fun annual event gives you a chance to see all the amazing ministries, groups and activities to be involved in at First Lutheran... and get some great bites of food too!



**O.W.L.S. (OLDER WISER LUTHERAN SENIORS)  
BY PASTOR ORV  
MONTHLY MEETINGS, SECOND TUESDAY, NOON**

**Tuesday September 13th                      12:00NOON**

**Hi there OWLS friends! Bring a potluck dish to share and  
be ready to have a great time with friends!**

**BE A PAL**

Have you been looking for a meaningful way to volunteer, without investing a lot of time? Want to make a difference in the life of a child? I have the **perfect** opportunity for you! Become a PAL (Partners in Learning Success) in the South Kitsap School District. It's easy: call or email Val Gilstrap, the coordinator of the program, go through a 2 hour training class, pick the school where you would like to be and talk to that school's coordinator, and you will be matched with a child. These are children that have a need for a stable mentor; they may have social or family issues that cause inconsistency in their lives, or are just having a rough time in school. The child's parent agrees to their child having a PAL, and children with severe behavioral problems can't participate in the program. You can decide which age you relate best to, from 1st grade (my little Pal was in 1st grade) up to junior high. The rest is fun: go visit your little Pal once a week for an hour, and do fun stuff. You and your Pal's teacher decide the best time for your visit, and if you can't make it one week, just email or call the school. What do you do with your Pal? It depends on the age and interests of the child. Catherine and I spent many hours coloring and cutting paper, and when the weather was good, I took my dogs and we walked around the school grounds with them. You might play games, read, go to lunch in the cafeteria, explore stuff online. No pressure to help with school work or talk about deep issues; the idea is for children to have a stable, caring adult in their life that likes them for who they are.

Are you interested? You know you are! Questions? Call Patty Henderson, 876-0623.

For more information, contact Val Gilstrap, PALS coordinator at 360.443.3579.

[gilstrap@skitsap.wednet.edu](mailto:gilstrap@skitsap.wednet.edu)

Become a Mentor and turn a lifetime of experience into the experience of a lifetime.

## DID YOU KNOW THIS about Holy Communion?

By Richard Courteau\*

Along with baptism, the Eucharist—Greek *eucharistia*, "gratitude"—is the most cherished of Christian rites, viewed as a true Bible-based sacrament by all denominations. Despite the solemnity of its precedent—Christ's Last Supper and subsequent suffering—the sacrament is approached with gratitude and joy.

\*Courtesy of "Sacred Origins of Profound Things" by Charles Panati

---

## Landscape Ministry

We started this ministry one year ago and we are blessed with 36 members plus the Noah's Ark Daycare and Preschool as participants. Hopefully these folks will sign up for another year. It would be great to have more folks to pitch in with this ministry which will continue to keep our grounds in tip top shape for our current members and to be a welcoming sight for perspective members! This is a great opportunity to be part of a ministry that holds no meetings but has a very visible impact on our congregation! Please contact me if you could join us beginning with September for a 1 year commitment to this project.

We are a group of folks dedicated to keeping our church grounds welcoming to our Congregation and visitors. We have all pledged \$10 per month so that we might have our landscaping needs taken care of by a professional landscaper.

If you are someone who wants to join no-meetings, no-time commitment Ministry, we are the one for You!!

### **How can I get involved?**

Make a pledge of \$10 per month

You can pay either: Monthly, Every 6 months or Yearly

### **Contact person:**

Cindy Peterson (360) 874-2151

[elsyncindy@wavecable.com](mailto:elsyncindy@wavecable.com)



# PLEASE COME!!

## **Game Night at First Lutheran Second Tuesday of the month Beginning September 13 at 6pm**

September 13<sup>th</sup> kicks off our Game night for this season. This is a night of folks getting together for food and fellowship who like to play Bunco or card games. We begin with a quick meal that everyone has contributed to at 6pm and begin play at 6:30. We are cleaned up and home by 9pm. Last year we only had Bunco players, however some folks have asked for a pin-nacle group and of course that would be great. Need 4 to play so if you've been looking for a pinochle game, here's your chance. Please look for a sign-up sheet beginning in Sept. for this activity or call Cindy Peterson and add your name to my list of Game Night Players.

Cindy Peterson 360 874-2151 [elslyncindy@wavecable.com](mailto:elslyncindy@wavecable.com)

The First Friday Readers will meet at the Senior Vista Apartments on September 2nd at 9:30 a.m. The book review will be "Sweetness at the Bottom of the Pie" by Alan Bradley. New readers always welcome! For more information, please contact Linda Helmer at 253-858-5703 or Kris Courteau at 876-5287.



**GLOBAL WARMERS:** 9:00 Wed. the 7th and 21st in the Fellowship Hall .

**MARY CIRCLE:** 7:00 Mon. the 12th @ the Ministry Center

**ELIZABETH CIRCLE:** Tue. the 13th at 9:30AM at church. Childcare available.

**SHALOM CIRCLE:** Tuesday the 13th at 7:00 PM at Patty Lester's house.

**STAMPING AND SCRAPPING on Saturday the 10th!**  
from Noon to 5pm at the Ministry Center.



## *September Birthdays*

- 09/01 Vi Whaley, Lorraine Olsen, Donna Pieze, Sue Dailey, Kailey Lyman  
09/02 Jean Thieme, Ana Lamphere, Cassandra Swope, Trevor Dorris  
09/03 Elsie Leiker, Laoes Paulson, Tiffany Hobson, David Jairl  
09/04 Marilyn Boe  
09/06 Lisa Berntsen  
09/07 Eric VanCamp  
09/08 Betty Shepherd, Angie Warrington  
09/09 Cathy Lane, Casey Coulon  
09/10 Muriel Peyrek, Pat Tolar, Darlene Mitchell, Megan Scott,  
Natalie Powell  
09/11 Donna Pierce  
09/12 Mary Kirk, Melanie Watkins  
09/13 Wayne Wright, Kathy Posey, Jason Olson, Alicia Peerson,  
Timothy Matz  
09/14 Nate Sawyer, Andrew Canady, Victoria Schmidt  
09/16 Whitney Langworthy, Kim Senter, Michelle Jorgenson,  
Michael Keppert  
09/17 Lynn Williams, David Turner, Phoebe Thompson  
09/19 Shermon Coulon, Ann Cook  
09/20 Eron Kendziora, Sarah Geiger  
09/21 Richard Wood  
09/22 Naleah Peerson  
09/23 George Tolar, Carrie LaJeunesse, Nikki Fisher  
09/24 Margaret Krueger  
09/25 Bob Jay, Steve Wright, Stephanie Kingsbury  
09/27 Kelly Hassebrock, Jana Sanders, Jessica Peters, Justin Lundgren, Deidra Heller  
09/28 Mac McCracken, Mary Deola, Amanda Breeding  
09/29 Hank Granse, Yvonne Garton  
09/30 Jean Storlee, Shelly Ransom, Brook Kopp



**(If you find a missing or incorrect birthday  
please call Kelly @ the office, we love getting  
new information for our family!)**



**WORSHIP SERVICES:**

8:00, 9:30 and 11:00

Nursery available at 9:30 & 11:00am

**Contacts**

Ministry Center: 876-3901

Church Building: 876-2613

Church office e-mail

[flchurch@wavecable.com](mailto:flchurch@wavecable.com)

**Doug Nemitz**

[doug@clergy.net](mailto:doug@clergy.net)

**Sonja Miller**

[Sonja@wavecable.com](mailto:Sonja@wavecable.com)

**Bruce Ewen**

[Musicbeme9@aol.com](mailto:Musicbeme9@aol.com)

**Tracy Powell**

[Adventures@wavecable.com](mailto:Adventures@wavecable.com)

**Business Administrator:**

**David Lester**

[flcba@wavecable.com](mailto:flcba@wavecable.com)

**Newsletter Editor:**

**Kelly Hassebrock**

[Kellyflc@hotmail.com](mailto:Kellyflc@hotmail.com)

**Noah's Ark Preschool**

895-1947 [noahsarkpreschool@wavecable.com](mailto:noahsarkpreschool@wavecable.com)

**Noah's Ark Childcare Center**

895-4195 [nadaycare.flcc@gmail.com](mailto:nadaycare.flcc@gmail.com)

[www.noahsarkdaycare.flcc@gmail.com](http://www.noahsarkdaycare.flcc@gmail.com)

**Church Website**

[www.firstlutheranpo.com](http://www.firstlutheranpo.com)

2483 Mitchell Road S.E.  
Port Orchard, WA 98366

Nonprofit Org.  
US Postage Paid  
Pt. Orchard, WA  
Permit No. 345

Address Service Requested



Always  
give  
yourselves  
fully to  
the work  
of the  
Lord ...

1 Corinthe 15:58

**ALL ARTICLES ARE  
SUBJECT TO EDITING**