

February 2012



a publication of First Lutheran
Community Church



*Meanwhile these three remain:
faith, hope, and love; and the
greatest of these is love.*

-1 Corinthians 13:13

Pastor Doug Nemitz

Virgil Wood, Pastor Emeritus

“Where there is no vision, the people perish.” —Proverbs 29:18—

Dear FLCC Family,

January has slipped passed us once again. It has traditionally been seen as a good time to reflect on the past year and consider what goals we'd like to set for 2012. If you're like me, you've learned to be somewhat selective regarding new year's resolutions—or forget about making them at all.

But I've been really pressed these last few months to think about my present future. As you know, my deliberations have led me to resign my call at FLCC. This time of discernment, along with some other factors, has challenged me to revisit my present future. I am passing the challenge along to you. It seems like a good thing for a pastor to do. Besides, why should I be the only one in thoughts, confusions, or considerations about the present future?

What is your present future? Is it dependent on the reality we see through the present or even the past? Is it limited by our own vision? Do we sometimes allow the drudgery, the mundaneness, or even the mediocrity of the present taint our vision of what the future could be? Or are we living the present reality only for the ride—without any real direction?

The journey of life is an open-book test—with the Bible being the book. Maybe a couple of reminders from the author might help. “Where there is no vision, the people perish” (Proverbs 29:18), and, “Now faith is the substance of things hoped for, the evidence of things not seen” (Hebrews 11:1).

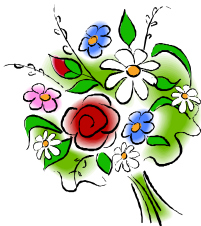
God is challenging us to regain our zeal and dreams. Even though the pressures of reality press in on us, God wants us to do great things. God certainly doesn't want us to perish. God gives us a Biblical truth: God wants us to believe in the ministries God has given us—and dream about ways God can change our world through those ministries.

I encourage you as we all embark on new journeys to believe, to have faith in God for the “things hoped for and the evidence of things not seen” in your ministries. Renew the passion and vision God has placed in you and allow God to mold your dreams into God's own. Dream your present future into God's possibilities. Then your reality will begin to reflect God's desires.

Let's all remember that we are in great hands—God's. God's Holy Spirit is alive and well and is more than ready to guide us into our present futures. I am certain that God will be leading us to help us vision God's glorious present future for each of us. Walk in faith, dream about how God can change the world through you, renew your zeal, see God's possibilities for you, be dreamers for God!

God's Richest Blessings,
Pastor Doug

Please sign up to sponsor Altar flower for 2012. The cost this year will remain the same, \$30 and you get to take the flowers home after the 11:00 service. Some open dates for 2012 are: Feb. 26, Mar. 25, May 27, June 10, 24, July 8, 15, 23, Aug. 12, 19, Sept. 2, 9, 16, Oct. 21, Nov. 4, 18, and Dec. 2, 9, 23 and 30th.



Have you gotten your 2011 Giving Statement from your



Simply Giving: Enjoy the convenience of electronic giving

Our church offers electronic giving, which allows you to make donations on a scheduled, automatic basis. If you are writing checks and preparing envelopes every week, you will especially appreciate electronic giving. It is convenient for you and provides much-needed donation consistency for our church. You can pick-up a Simply Giving Form at the church office or the Welcome Center. Please contact Sonja at the office if you have any questions, 876-3901.

General Budget Update December 2011

Expenses YTD-	\$ 414,682
Total Income YTD-	\$ 389,077
Shortage	\$-25,605
Pledged Giving rec'd	\$273,837 or 97%
Unpledged giving/income	\$115,240



Thank you for your tithes and offerings. First Lutheran is solely supported by your gifts. If you have questions about your giving statement please contact Sonja in the office.

NEWS FROM NOAH'S ARK PRESCHOOL

Thank you, thank you to those who ate at the Congregational meeting. Your generous donations helped the Preschool earn over \$500 at our fundraiser lunch. Your support of our fundraisers is so appreciated. Our fundraising efforts help us keep our tuition rates as affordable as possible for our families. Your donations help keep our preschool ministry alive and flourishing in our community. With your assistance, we help guide the hearts and minds of 100 young people each year. In addition, our ministry efforts often reach and affect the families of our students. Thank you for your support!

Since we just finished our January Congregational meeting, it seems appropriate to explain my plan for funding Noah's Ark Preschool. My annual goal is for class registration fees and monthly tuition fees to pay for preschool staff salaries and operating expenses. These expenses include the monthly User Fee we pay the church, our phone/internet bill, and the cost of our consumable supplies such as: construction paper, markers, glue sticks (we use a LOT of glue sticks), beads and other craft supplies, copy machine paper, paper cups, napkins, paper towels, cleaning supplies, postage stamps and more. Our church User Fee includes payment toward power, sewer, garbage, and water usage, as well as church custodian and bookkeeper services. Paying for attendance to our annual preschool teachers' conference for continuing education is also one of our operating expenses. My hope is that our fundraising efforts will cover our "extra" expenses. These expenses include purchasing new or replacement equipment for the classrooms, playground and teacher use, paying for the supplies and extra teacher's assistant salaries for our fun days and parties (Christmas parties/gifts, Spring Mother's Day programs/gifts, Dads' Nights, Halloween treats, Valentine treats, end of the year gifts), and for scholarship assistance. When our fundraising efforts go well, we are able to do a little better in updating our equipment (toys and learning tools). This past year we paid \$3000 towards the new playground toy purchased by the Daycare and Church and which is so enjoyed by both Daycare and Preschool children.

A nurturing, caring start to their educational career is important for all children. As a ministry of the church, I think it is important for Noah's Ark Preschool to provide scholarship assistance to the families that are in need so their children can have that educational beginning. With those thoughts in mind, it is my financial goal to run the Noah's Ark Preschool program so that we cover our expenses, purchase what we need to stay competitive in the preschool business, and stay in the black on the balance sheet. Since we are a ministry it is my goal to break even, but not be a money maker. Thank you for your assistance in attaining my goal!



FEBRUARY YOUTH NEWS

YOUTH GROUP

2/15 Family Valentine Potluck Meet
at the Ministry Center @ 6:30
w/ food, games, fellowship!

2/26 Ice Skating in Bremerton
Meet at church at 1:45pm, go skating
then back for pizza, movie and H2H.



Senior High Sundays

2/5 ~ 9:30 meet at kitchen,
prep soup and bowls
2/12 ~ 9:30 class at church then
Reception for Pastor
2/19 ~ no class, Winter Retreat
2/26 ~ 9:30 Breakfast Club

Junior High Sundays

2/5 ~ 9:30 class at MC
2/12 ~ help w/ donuts &
Reception for Pastor
2/19 ~ no class, Winter
Retreat
2/26 ~ 9:30 class at MC

H2H for February

February 12th - meet at 6PM for class

February 26 –meet at 6PM for class

Email: adventures@wavecable.com
or text 360-340-6117

YOU ARE INVITED

to come for Wednesday Night
Lent Soup Suppers. Beginning
Feb. 22nd on Ash Wednesday
there will be a soup supper at 6:00
every Wed. through March 28th
followed by Lent Worship at
7:00pm

FEBRUARY ADVENTURE NEWS

Be sure to join us after the 9:30 service on February 12th for a Farewell Party with light lunch for Pastor Doug and Pam.

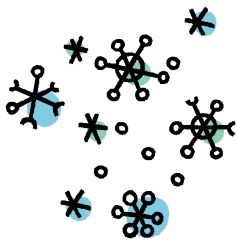
Join us on Wednesday Nights for Winter Fun!

February 1st — Kids' Winter Crafts and Movie Night.
7pm at church...dress comfy & join us for a movie,
snacks and some winter crafts.



February 15th —Valentine Potluck. Meet at 6:30 at the Ministry Center with a dish to share. Bring a \$5 or less gift and be part of a fun gift exchange. Later we will play games and frost some heart cookies.

Note... Feb 8th there will be child care available but the Mom's group does not plan to meet this night.



LOOK WHAT'S HAPPENING

FIRST LUTHERAN IS TURNING 75 YEARS YOUNG!!

Join the team to help plan a really fun birthday party for FLCC. The first planning meeting is Thursday February 9th at 6:00pm at Brian Petro's office at 1200 Bethel Rd. There are lots of things that need to be done so come find out how you can join the fun! Call the office for more information, 876-3901 or Brian Petro at 360-621-7219.



**DON'T MISS CHURCH ON
SUNDAY FEBRUARY 5TH!!!
IT WILL BE A SOUPER SUPER
BOWL SUNDAY!!**

**Wear your football gear and come for some fun!
The youth will be selling Soup Bowls which will include your
choice of 3 soups with a bread bowl and you can even get chocolate chip
cookies.**

**Also, we will one again be participating in the nationwide Souper Bowl of
Caring. In 2011 this countrywide event of 15,835 local groups, raising
funds and collecting food for their local charities, generated over 9 million
dollars! And all you have to do is throw your pocket change in a soup pot
to make a difference!**

See you Super and Souper Bowl Sunday!!!



O.W.L.S. (OLDER WISER LUTHERAN SENIORS)
BY PASTOR DOUG
MONTHLY MEETINGS, SECOND TUESDAY, NOON

Tuesday February 14th 12:00NOON



*OWLS you are invited for a special
Valentine's Day Lunch.*

Lunch and dessert will be provided for you for a small
\$3 donation. Come enjoy a great meal and some fun
conversation with friends. **HAPPY VALENTINE'S DAY!**

The program will be the 2nd half of the movie "Gospel Road."

HELP WANTED!!! We need you!!

Wedding Coordinator Needed!

Its so fun and easy! We only have around 3-5 weddings a year. All you have to do is get the date on the calendar, help them through the rehearsal, and get them through the wedding ceremony. Kris Courteau would be happy to give you the details.

Button Pusher for the 9:30 Worship Services.

Its really that easy!

Just once a month we need someone to run the Big Screen computer during the 9:30 service. The presentation will be ready and all you have to do is advance the slides. Please contact Kelly at the office if you could help out.



First Life

and



PARI SH NURSING

Parish Nurses are registered nurses who can assist with health related concerns or questions and can help with seeking and utilizing community resources. Please contact the church office at 876-3901 or Karen Schneider, RN at 876-2304 or Tina Soete, RN at 871-1322, Kathleen Nenninger, RN at 253-853-4663, Carmen Arehart, RN at 360-990-3821, Marcy Crebs, LPN at 360-620-9487.

BLOOD PRESSURE/DIABETES SCREENING

How is your blood pressure? You can have your blood pressure checked on the last Sunday of every month in the Fellowship Hall in the Ruth Room #3 before and after the 9:30 a.m. services.



FIRST DRIVERS

Transportation can be provided during the day for those who need assistance to keep medical, dental, or therapy appointments. You must be able to get in and out of a car with minimal assistance. You can call the church office at 876-3901 or Karen Schneider at 876-2304.

CASSEROLE CONNECTION: MEALS THAT HEAL

Meals are offered on a short term basis for those who may be experiencing post hospitalization, illness, trauma, or families with a newborn. Please call Kathy Posey at 871-5692 or the church office at 876-3901.



FIRST CAREGIVERS SUPPORT GROUP

If you are taking care of a loved one and would like to meet with others who are caregivers in a caring support group, please join us. The group meets on the last Wednesday of every month in the old church library. The meeting this month will be on February 29 at 11 am. For more information, call Dixie Douthit at 876-5270 or Linda Helmer at 253-858-5703.

PLEASE COME!!



PLEASE JOIN US...

Sunday February 12th following the 9:30 service we will be having a light lunch and dessert to say Thank You to Pastor Doug and Pam and send them with our blessings. There will be no 11:00 service this day.

The First Friday Readers will meet on February 3. The book review will be "Girl in Translation" by Jean Kwok. It is a coming of age story of a young Chinese girl who immigrates from China to New York City with her mother. The book selection March 2 is "Driftless" by David Rhodes. New readers always welcome! For more information, please contact Linda Helmer at 253-858-5703 or Kris Courteau at 876-5287.



GLOBAL WARMERS: 9:00 Wed. the 1st and 15th, in the Fellowship Hall.

MARY CIRCLE: 7:00 Mon. the 13th @ the Ministry Center

ELIZABETH CIRCLE: Tue. the 14th at 9:30AM at church. Childcare available.

SHALOM CIRCLE: Tuesday the 14th at 7:00 PM at Patty Lester's house.

STAMPING AND SCRAPPING on *Saturday the 11th!****
from Noon to 5pm at the Ministry Center.



February Birthdays

02/01 Kay Austin
02/02 George Larson, Phyllis Nadeau
02/03 Caitlin Gray
02/04 Mara Blackshear, Allison Fisher
02/05 Kasey Olmstead, Jessie Brockmiller, Elaine Loan,
Pam Nemitz
02/06 Russ Powell,
02/07 Fiona O'Brien
02/08 Lelia Hatlestad
02/10 Erin Hutchison
02/11 Lennart Hagardt, Andrea Moore
02/12 Irene Watson, Lorin Blank
02/13 Audrey Bates, Carol Mackie, Rebecca Kusche
02/14 Jim Nadeau, Freddie Nordeen, Bryan Johnston,
Madison Scaringella
02/16 Randy Peterson, Gail Johnston, Scott Crebs
02/17 Marjorie Timm, Ed Bushnell, Lori Gray
02/19 Judith Wood, Linda Foster
02/20 Lucy Grayson
02/21 Mike Shortt
02/22 Norma Larson, Diane Gander
02/23 Larry Densmore, Tom Speake, Catherine Fairgrieve
02/24 Jane Ingulsrud, Paula Rader, Megan Howard, Daniel Weatherford
02/25 Tammy Heuser, Ben Stratton
02/26 Rebekah Tillman, Stephanie Tippery, Trevor Helgeson, Erika Pierson
02/27 Barbara Merriman, Anika Kusche
02/28 Richard Boettcher
02/29 Judy Olson



**(If you find a missing or incorrect birthday
please call Kelly @ the office, we love getting
new information for our family!)**



WORSHIP SERVICES:

8:00, 9:30 and 11:00

Nursery available at 9:30 & 11:00am

Contacts

Ministry Center: 876-3901

Church Building: 876-2613

Church office e-mail

flchurch@wavecable.com

**2483 Mitchell Road S.E.
Port Orchard, WA 98366**

Doug Nemitz

doug@clergy.net

Sonja Miller

Sonja@wavecable.com

Bruce Ewen

Musicbeme9@aol.com

Tracy Powell

Adventures@wavecable.com

Business Administrator:

David Lester

flcba@wavecable.com

Newsletter Editor:

Kelly Hassebrock

Kellyflc@hotmail.com

Noah's Ark Preschool

895-1947 noahsarkpreschool@wavecable.com

Noah's Ark Childcare Center

895-4195 nadaycare.flcc@gmail.com

www.noahsarkdaycare.flcc@gmail.com

Church Website

www.firstlutheranpo.com



**ALL ARTICLES ARE
SUBJECT TO EDITING**